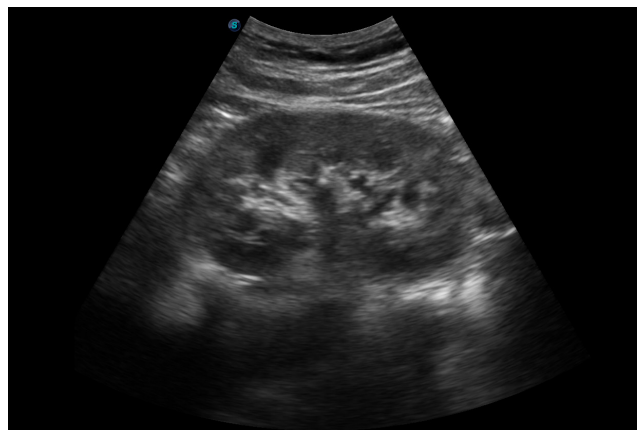
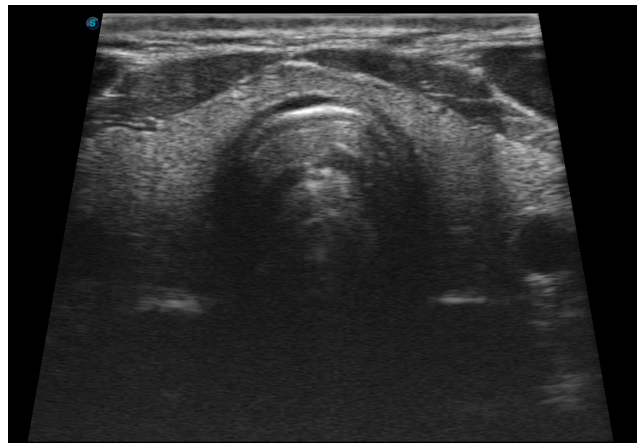


Caring for Life through Innovation

[illegible]

■ Efficient Diagnosis

- μ-Scan - Speckle Reduction & Edge Enhancement
- Spatial Compound Imaging
- PIH - Pure Inversion Harmonic
- Wide Scan - Enlarge Image Area
- PW Doppler
- Chroma - Highlight Image Details
- B Steer for Linear Probe

■ Ease of Use

- Quick Boot Up
- Auto Brightness Adjustment
- Auto Image Optimized
- Auto IMT
- Auto Trace

■ Ergonomic Design

- 3 Transducer Ports
- Light Weight and Compact
- 15.6 inch Anti-flickering HD LED Screen
- Tilting Monitor Angle Adjustment
- Backlit Keyboard and Intelligent Panel
- Long-lasting Battery for 90 mins

■ Expansive Accessories

- Wi-Fi and Bluetooth Available
- DICOM 3.0
- 500GB Hard Disk
- Height Adjustable Trolley
- Durable, Carry-on Site Suitcase

SonoScape

Yizhe Building, Yuquan Road, Shenzhen, 518051, China

Tel: 86-755-26722890

Fax: 86-755-26722850

E-mail: sonoscape@sonoscape.net

www.sonoscape.net



ISO 13485

CE 0197